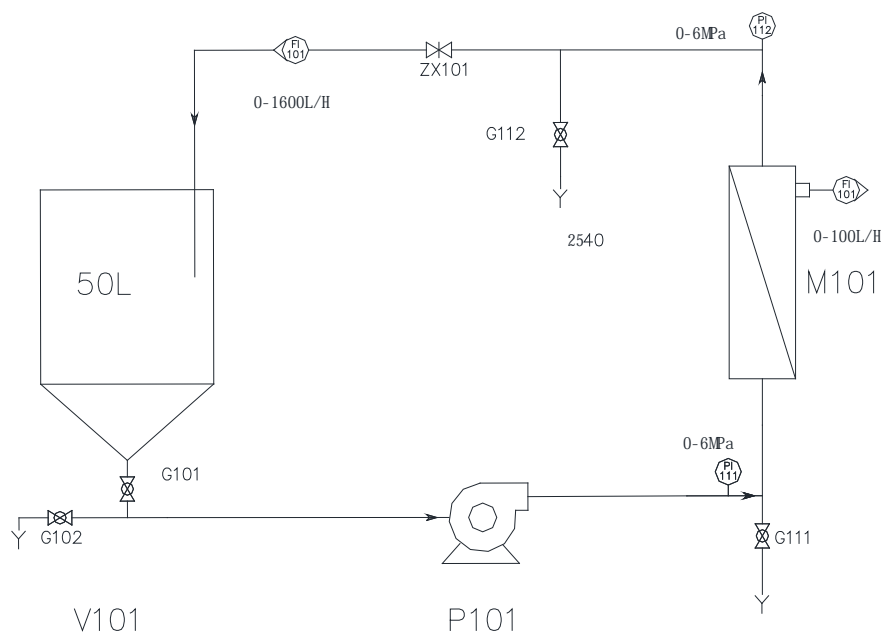


.....	2
.....	2
.....	3
.....	4
.....	5
..... !	
.....	6

40Bar



	V101	P101	M101		
1					
	V101		G101	ZX101	G102
G103	G104			P101	
2					
	V101		G101	ZX101	G102
G103	G104			P101	ZX101
					V101
3					

1. ,
2. 8-10L ,
- 3.
- 40Bar
- 4.
- 5.
6. 4040 5.6 80L/H,
20—100L/H
7. UPVC
- 8

4040	
	WTM-4040G
	4040
	5.6
	7.0Mpa
	5—45
PH	0--14
	10-15L
	20—100L/h
	50—500L

4040

M202-4040F		0.3	PVDF	GE
M201-4040F		0.04	PS	GE
F802-4040F		100000	PVDF	
F801-4040F		20000	PES PS	
F207-4040F		20000	PAN	GE
F206-4040F		10000	PES	GE
F205-4040F		8000	TFM	GE
F204-4040F		5000	PES	GE
F203-4040F		3500	TFM	GE
F202-4040F		2500	TFM	GE
F201-4040F		1000	TFM	GE
D202-4040F		150-200	TFM	GE
D201-4040F		300-500	TFM	GE
A101-4040F		SE SG	PA	GE

