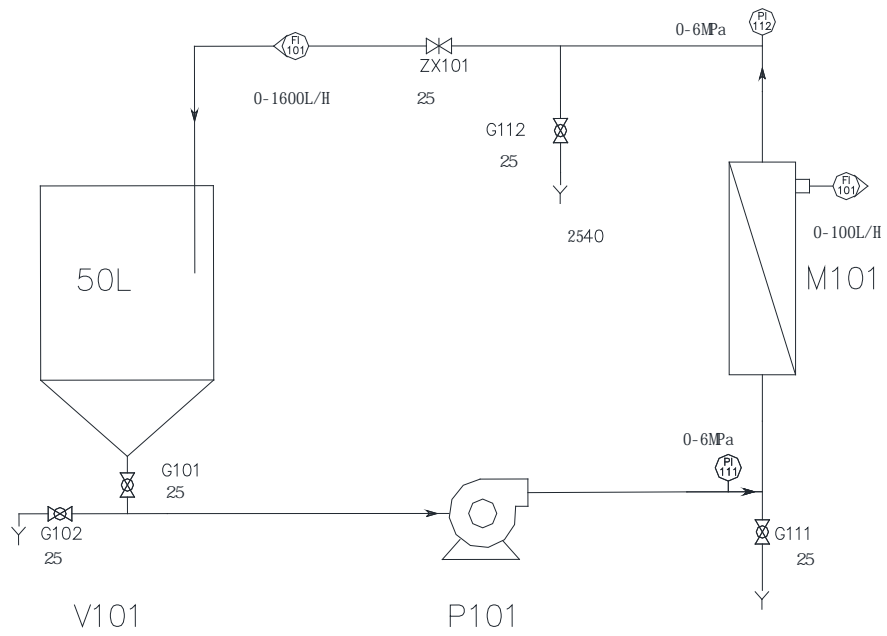




.....	2
.....	2
.....	3
.....	4
.....	5
..... !	
.....	6

40Bar



	V101	P101	M101		
1					
	V101		G101	ZX101	G102
G103	G104		P101		
2					
	V101		G101	ZX101	G102
G103	G104		P101		ZX101
					V101
3					

1. ,
2. 8-10L ,
3.  
40Bar
- 4.
- 5.
6. 4040 5.6 80L/H,  
20—100L/H

1		100 L	PE		1	
2		30 5	UPVC		1	
3		4.0KW 380V			1	ABB
4		Q=1.8m <sup>3</sup> /H H=400m			1	

5 50m 泵房

4040

M202-4040F		0.3	PVDF	GE
M201-4040F		0.04	PS	GE
F802-4040F		100000	PVDF	
F801-4040F		20000	PES PS	
F207-4040F		20000	PAN	GE
F206-4040F		10000	PES	GE
F205-4040F		8000	TFM	GE
F204-4040F		5000	PES	GE
F203-4040F		3500	TFM	GE
F202-4040F		2500	TFM	GE
F201-4040F		1000	TFM	GE
D202-4040F		150-200	TFM	GE
D201-4040F		300-500	TFM	GE
A101-4040F		SE SG	PA	GE

